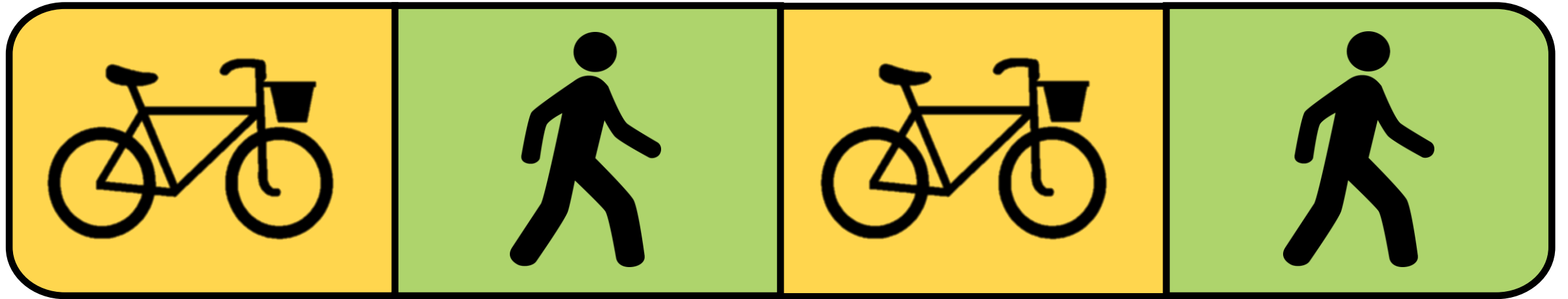


Overview of CAMPO Bicycle and Pedestrian Count Program



Steve Dobrinich

Corvallis Area Metropolitan Planning Organization

Transportation Planner

sdobrinich@ocwcog.org



Overview

- ***Why Count?***
- ***Counter Equipment and Set Up***
- ***Count Locations and Categories***
- ***Count Numbers on Eric E. Austin Memorial Bypass***
 - *Daily Count Totals*
 - *Two Week Count Totals*
 - *Direction of Travel*
 - *Hourly Totals*
 - *Weather Conditions*

Why Count?

Program Purpose: Develop a better understanding of how people walking and riding bikes are traveling throughout the CAMPO planning area

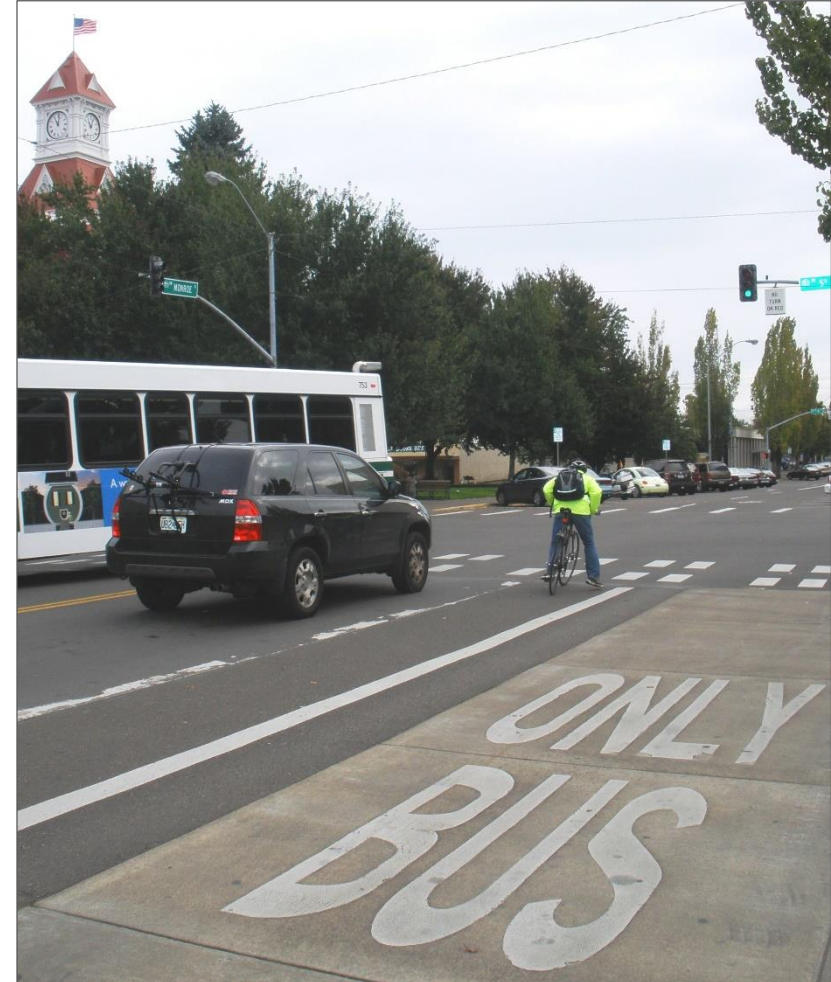
Program Goals:

1. Measure the long-term usage of bicycle and pedestrian facilities (including changes in use over time)
2. Evaluate the impact of projects
3. Understand safety trends
4. Help prioritize long-range infrastructure investment

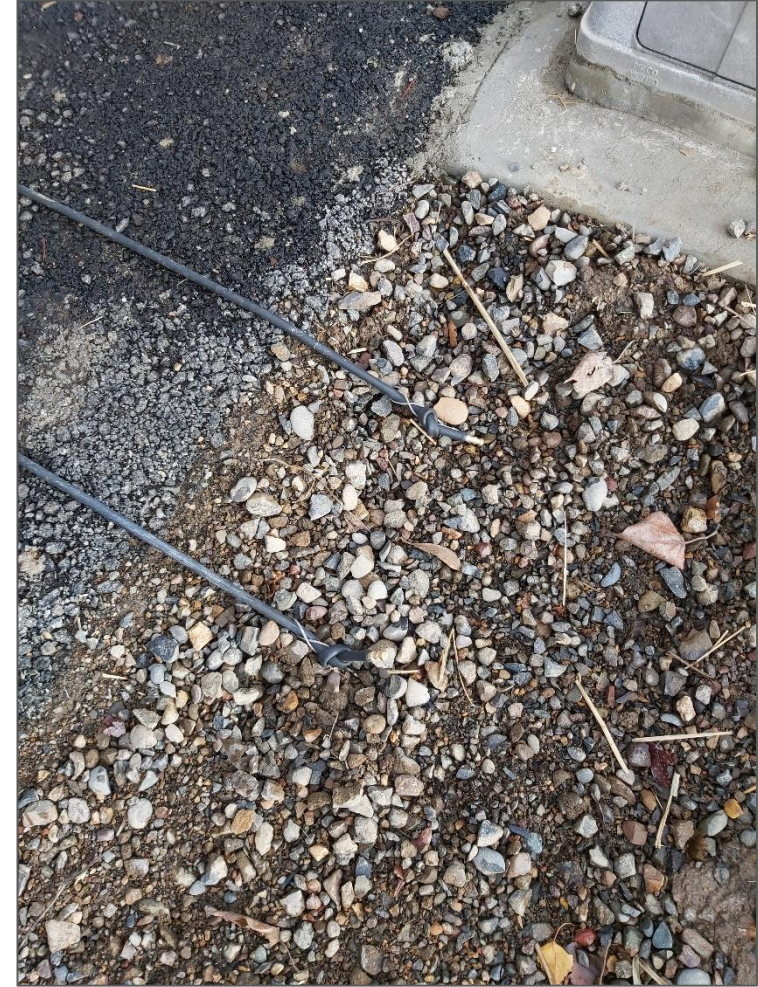
Why Count?

Benefits of Data Collection

- Help inform facility design (e.g. how wide a path or sidewalk should be)
- Support funding and policy decisions
- Track progress on the multi-modal performance measures



Counter Equipment and Set Up

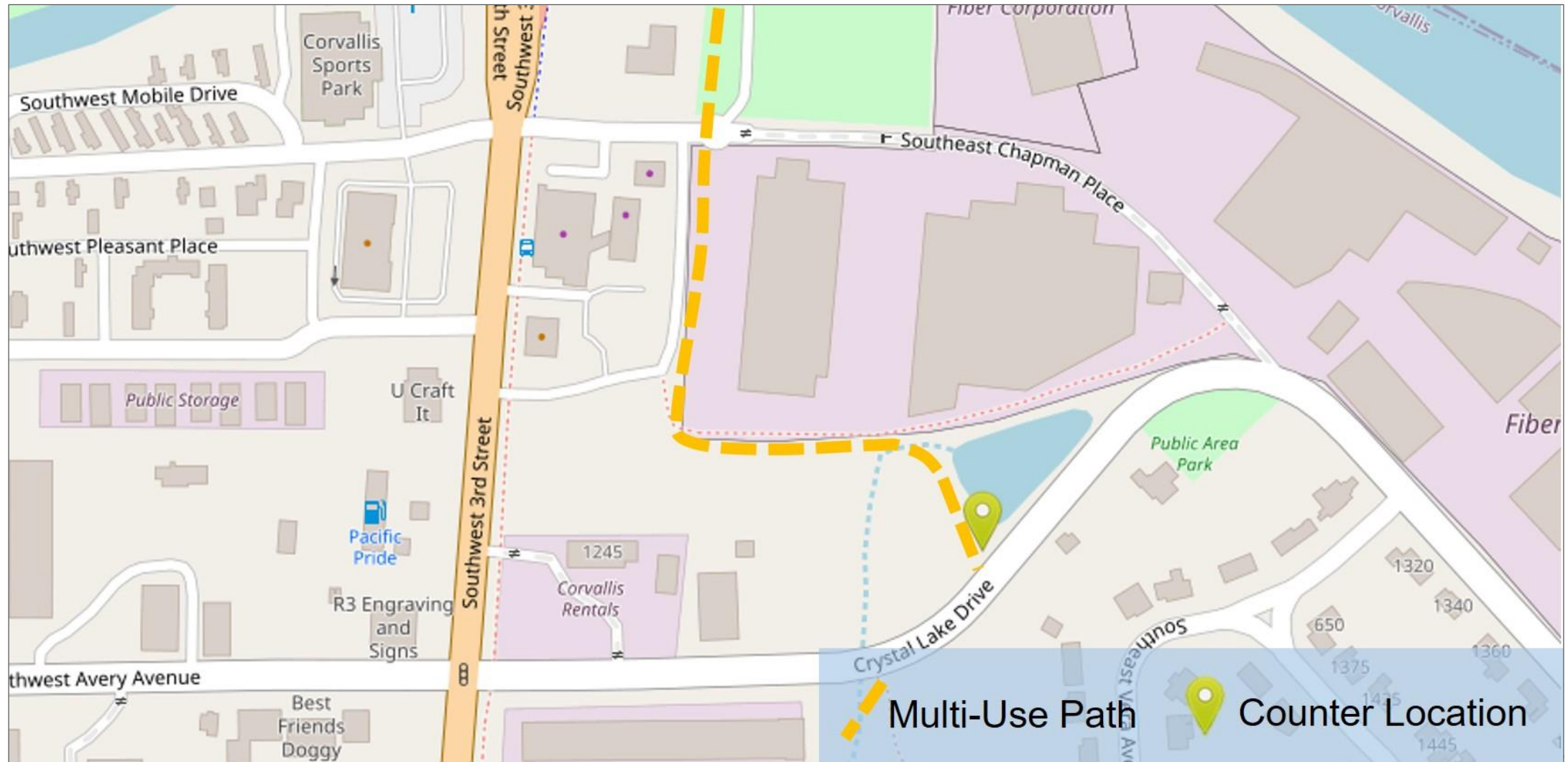


Count Locations and Categories

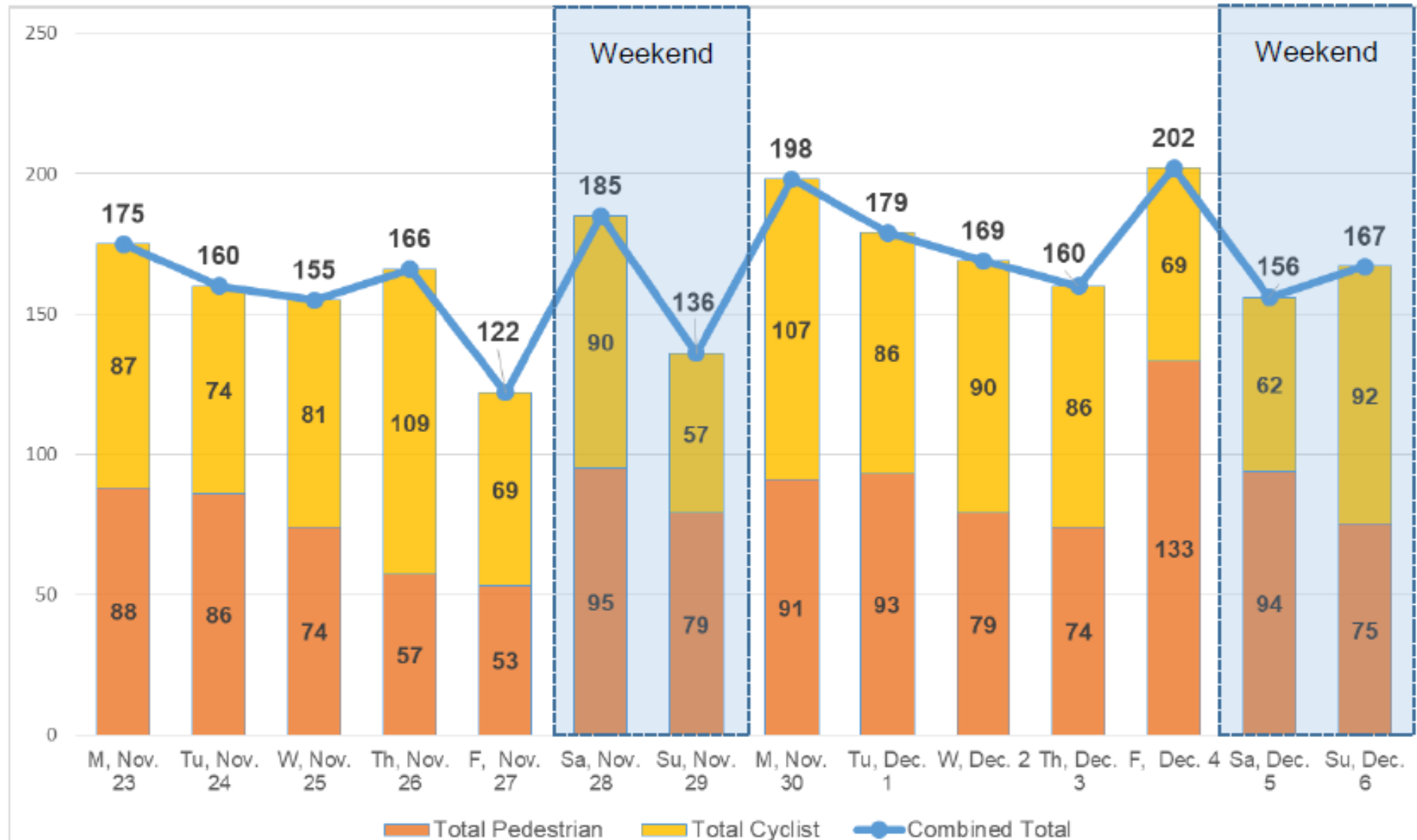
Five count location categories:

1. **Before & after projects** (includes potential improvement areas)
2. **Change over time** (builds on historic count locations)
3. **Regional travel patterns**
4. **Areas of interest** (schools, bus stops, pinch points, etc.)
5. **Safety** (locations where bicyclist and/or pedestrian collision numbers are high)

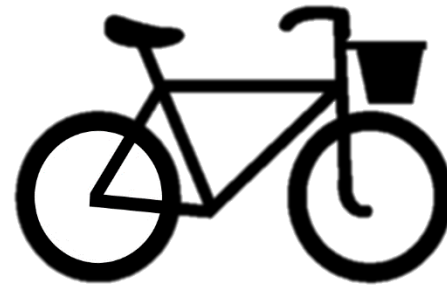
Eric E. Austin Memorial Bypass



Daily Count Totals



Two Week Count Totals

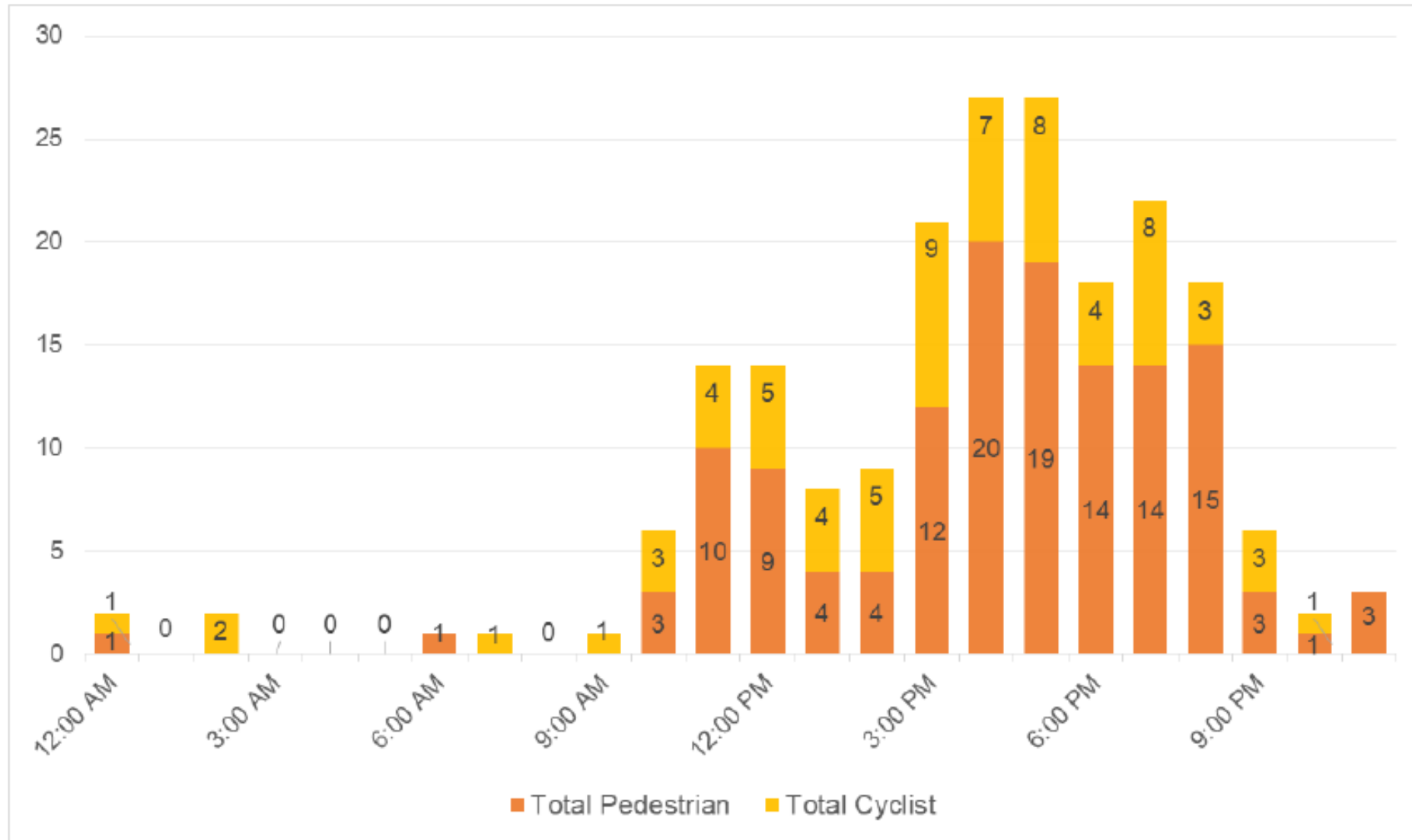


	Total Pedestrian	Total Cyclist	Combined Total
TOTALS	1,171	1,159	2,330
PERCENTAGE	50.3%	49.7%	100%

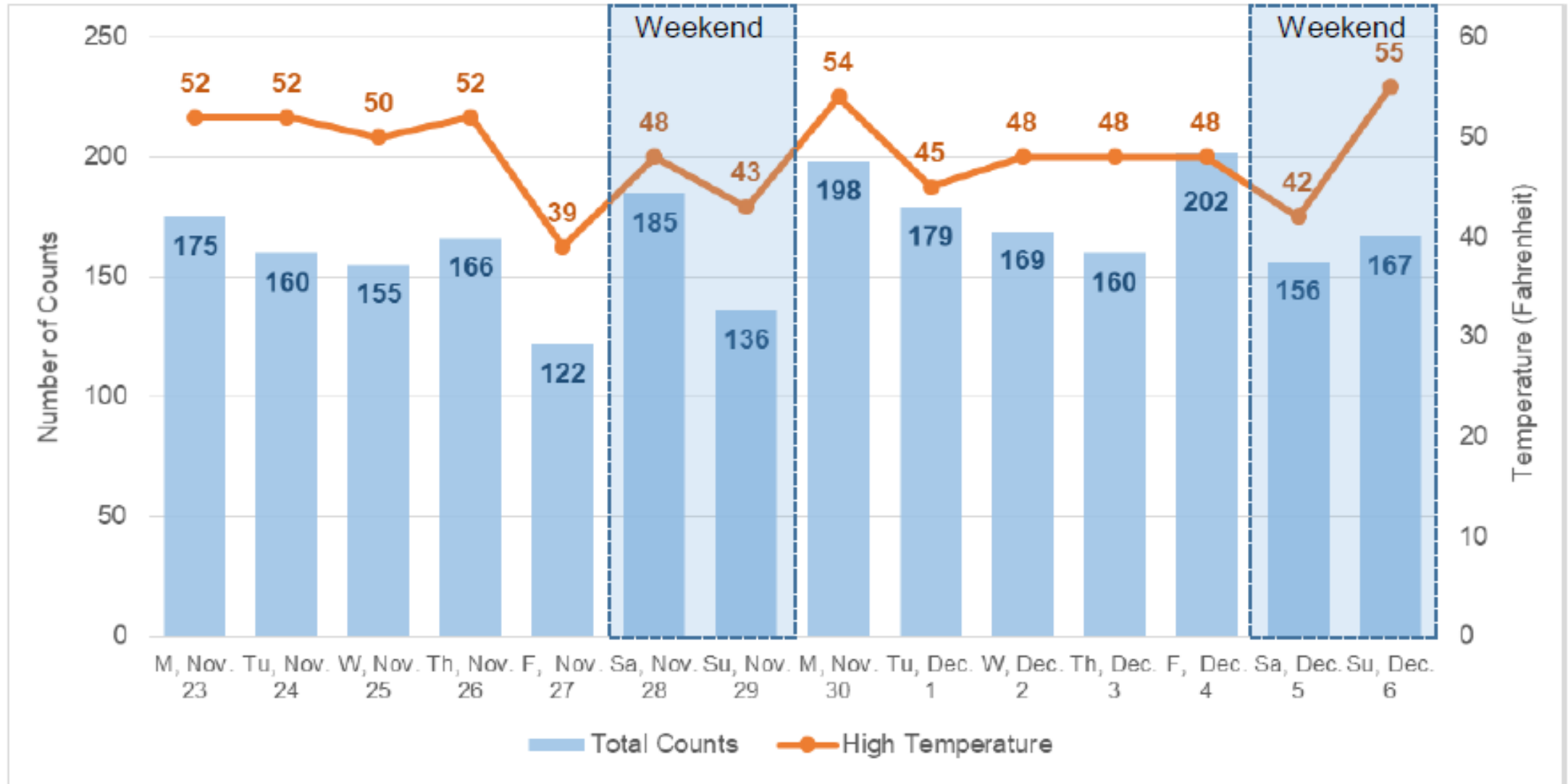
Direction of Travel

Date	Pedestrian Counts		Cyclist Counts		Combined Counts	
	North Bound	South Bound	North Bound	South Bound	North Bound	South Bound
M, Nov. 23	55	33	45	42	100	75
Tu, Nov. 24	49	37	36	38	85	75
W, Nov. 25	45	29	42	39	87	68
Th, Nov. 26	28	29	69	40	97	69
F, Nov. 27	22	31	40	29	62	60
Sa, Nov. 28	60	35	49	41	109	76
Su, Nov. 29	44	35	27	30	71	65
M, Nov. 30	45	46	56	51	101	97
Tu, Dec. 1	53	40	42	44	95	84
W, Dec. 2	49	30	52	38	101	68
Th, Dec. 3	51	23	43	43	94	66
F, Dec. 4	84	49	39	30	123	79
Sa, Dec. 5	60	34	34	28	94	62
Su, Dec. 6	37	38	56	36	93	74
TOTALS	682	489	630	529	1312	1018

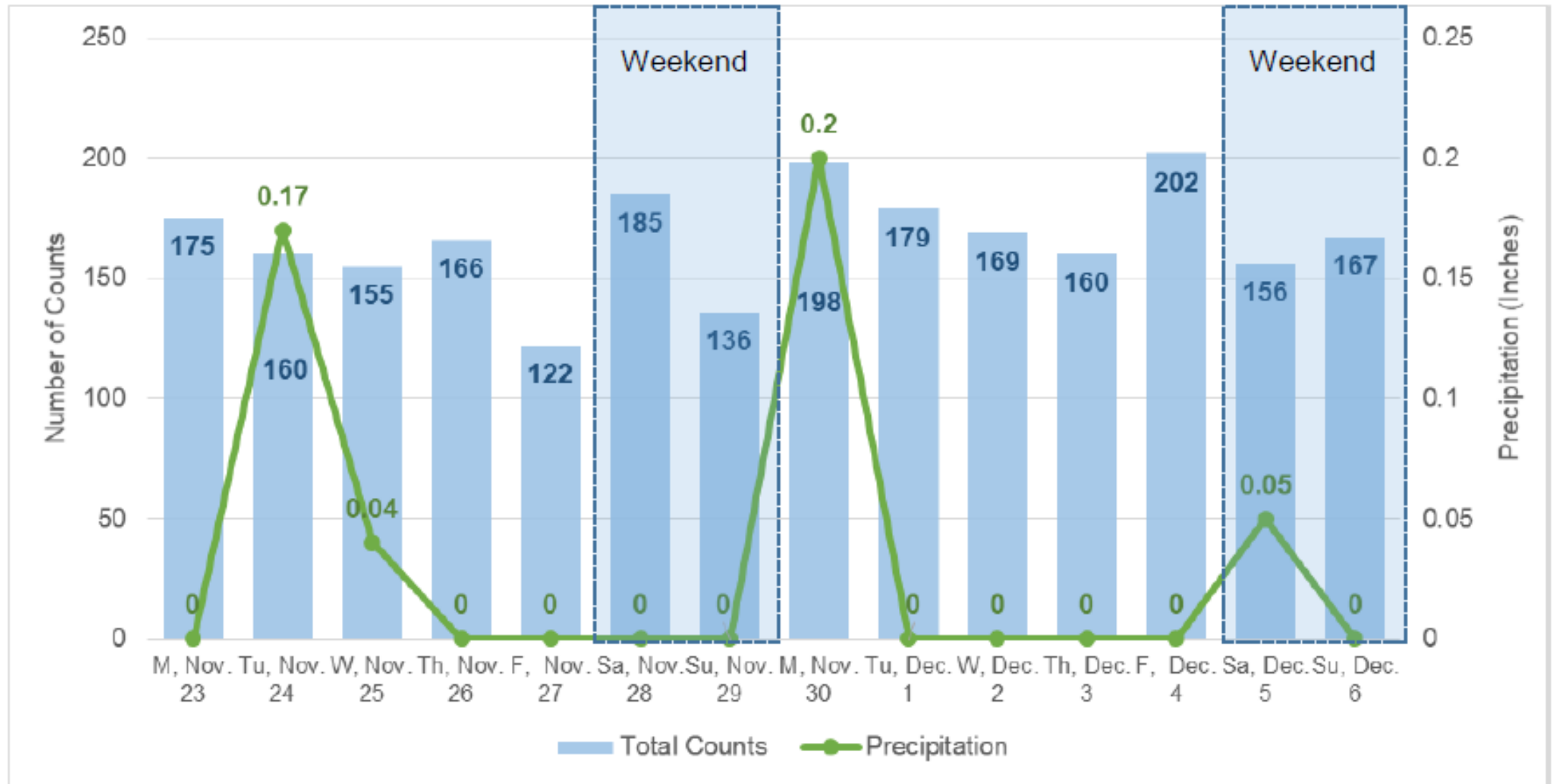
Hourly Totals (Friday Dec. 4)



Daily High Temperature and Total Counts



Daily Precipitation and Total Counts



Contact Information

Steve Dobrinich
Corvallis Area MPO
Transportation Planner
sdobrinich@ocwcog.org
541-223-7040

