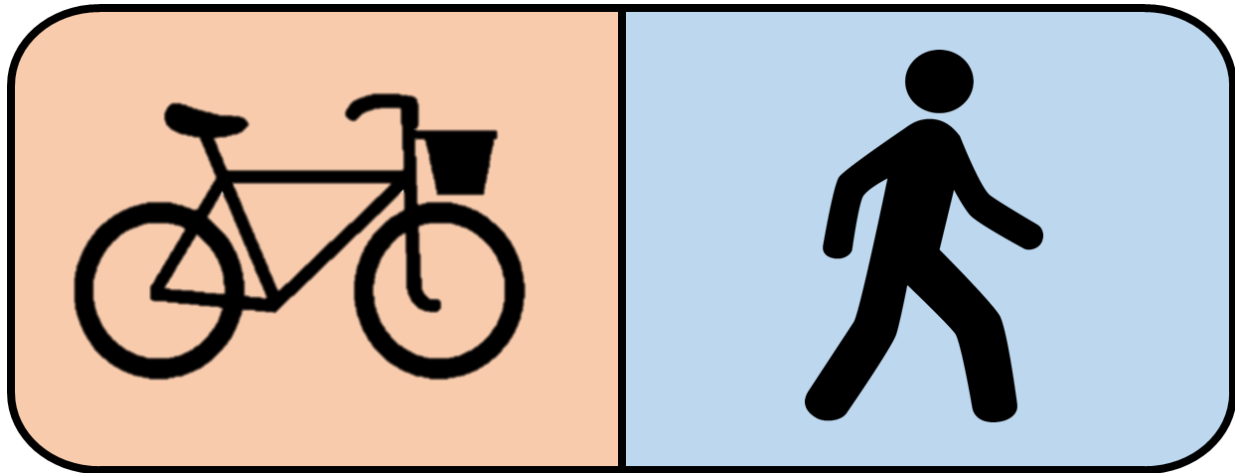


Bicycle and Pedestrian Count Data Report



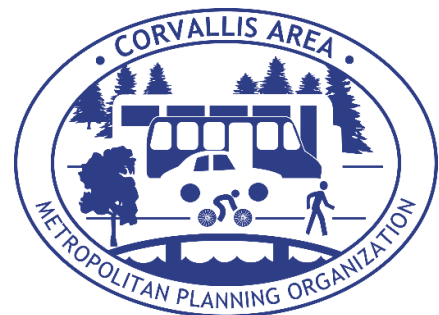
NW 11th Street at NW Buchanan Ave

June/July 2022

(Only bicycle counts collected at this location during reporting
timeframe)

Prepared By:

Corvallis Area Metropolitan Planning Organization
777 NW 9th Street, Suite 204C
Corvallis OR, 97330
www.corvallisareampo.org/



Background and Purpose

The purpose of this report is to provide an overview of bicycle count data collected by the Corvallis Area Metropolitan Planning Organization's (CAMPO) automated counter. Information about CAMPO's Bicycle and Pedestrian Count Program, including additional reports, can be found [HERE](#).

Count Equipment

CAMPO owns and operates two mobile MULTI bicycle/ pedestrian counting units. Each counting unit is comprised of a pyro-box which utilizes passive infrared technology to detect the body heat of passing pedestrians and pneumatic tubes which capture air pulses generated by bicycles passing over them. Data is stored by the equipment and can be reviewed and analyzed by staff through a web platform.

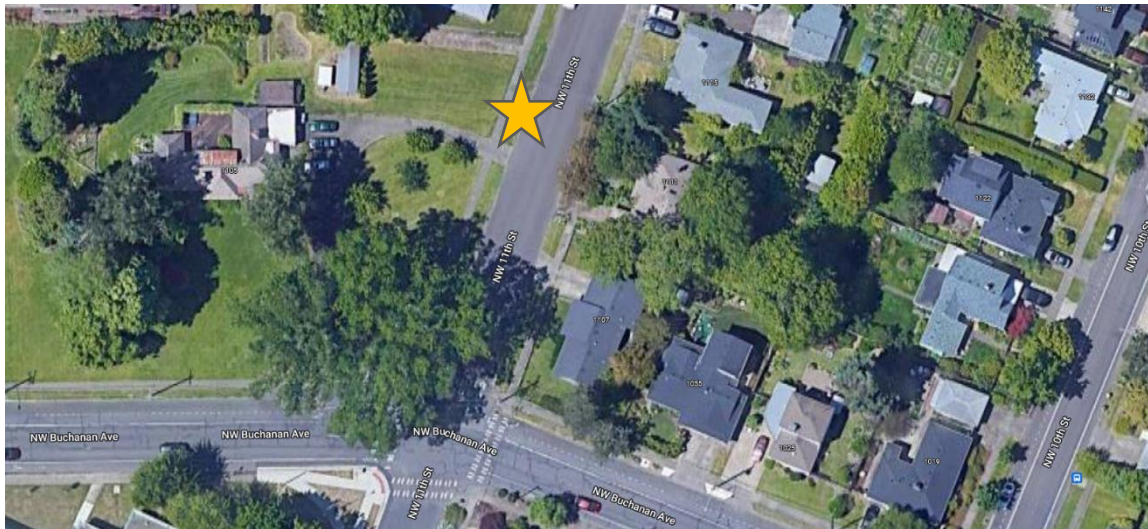
Figure 1: Count Equipment Installed in the Field



Time Frame and Location

This report covers five weeks of counting on NW 11th Street near the intersection of NW Buchanan Ave. The reporting period covered in this document began on Monday, June 13, 2022 and ended Sunday, July 17, 2022.

Figure 2: Count Location



Other Notes

- Count equipment was attached to a crossing sign and tubes were extended across 11th Street just north of Buchanan Ave
- 11th Street is identified as a low stress bikeway in the City of Corvallis Transportation System Plan
- No pedestrian counts were collected at this location

Count Data

Figure 3: Five Week Count Data

	Total	Total North Bound	Total South Bound	% North Bound	% South Bound	Weekly Avg.	Daily Avg.
People Biking	2,015	751	1,264	37.3%	62.7%	403	58

Figure 4: Daily Bicycling Count Totals – June 13 through June 26

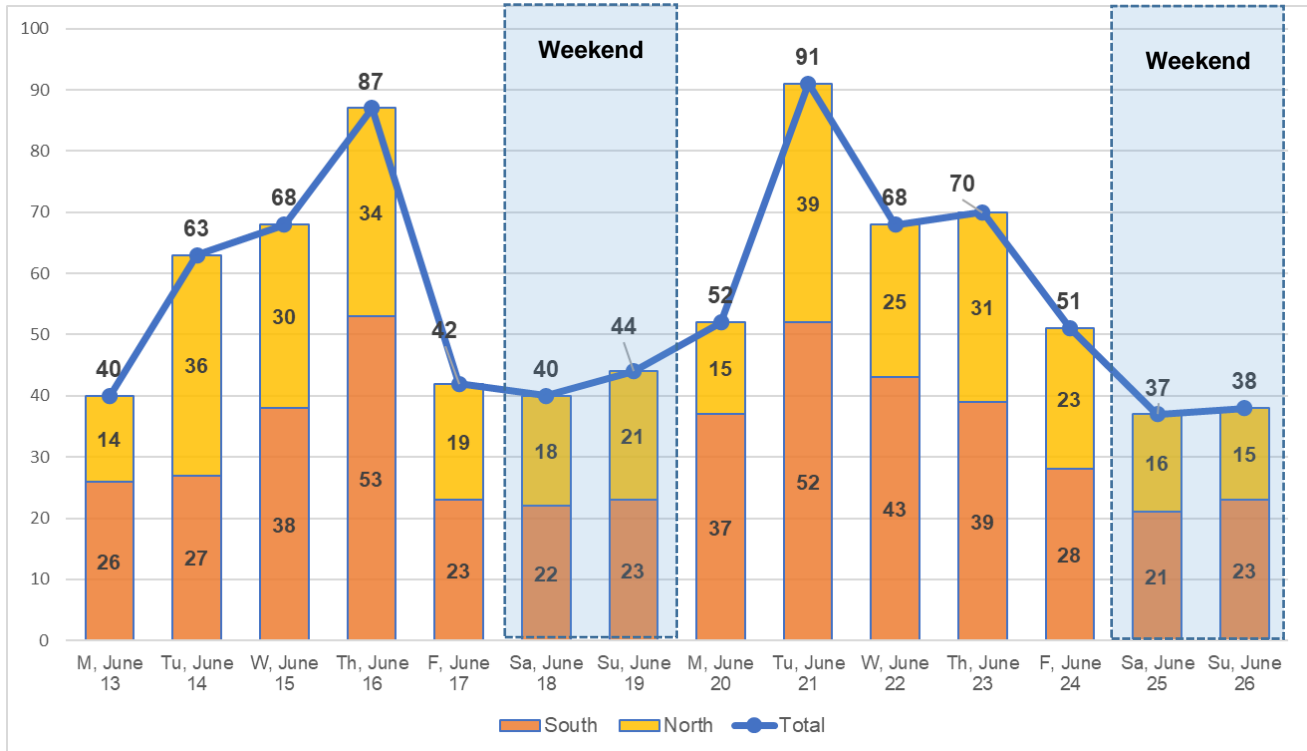


Figure 5: Daily Bicycling Count Totals –June 27 through July 10

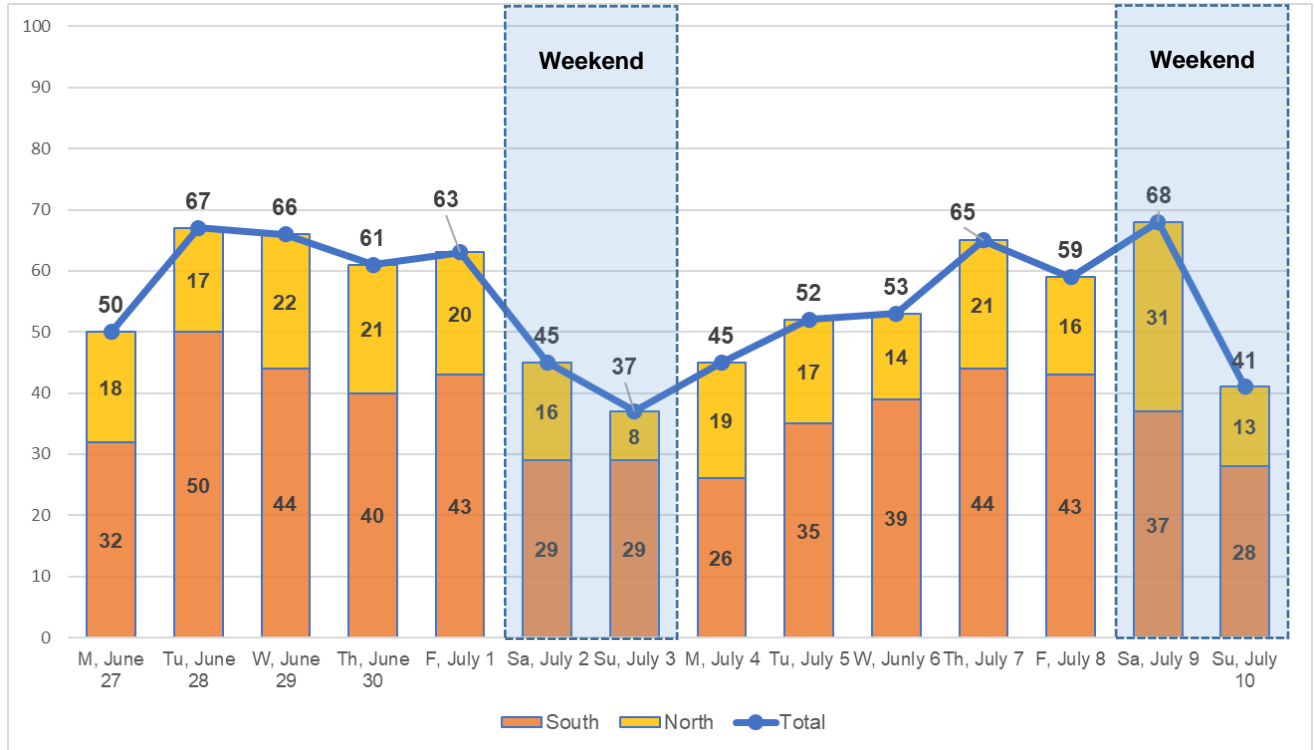


Figure 6: Daily Bicycling Count Totals –July 10 through July 17

